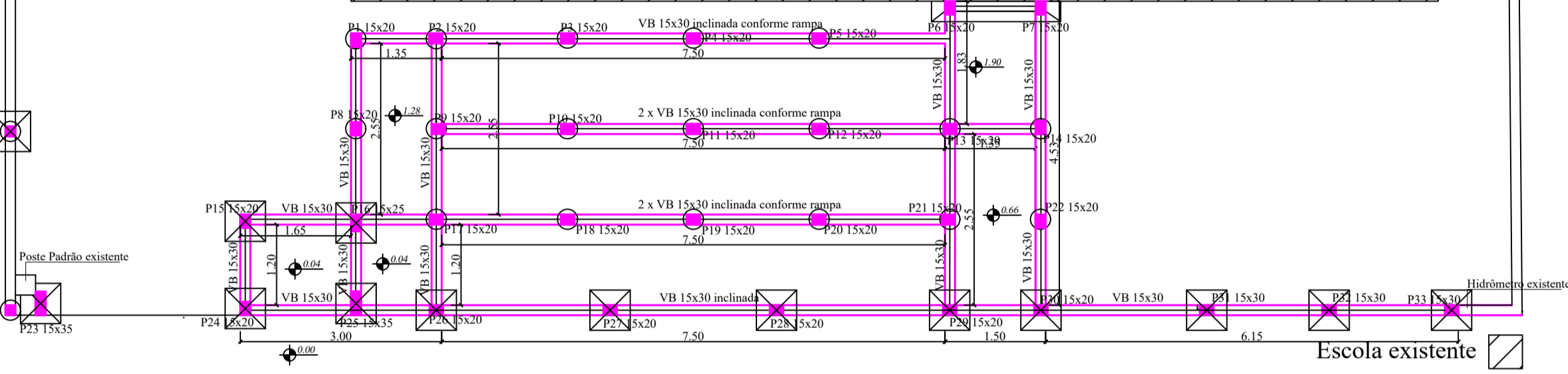


ESCOLA EXISTENTE

Nesta lateral, executar muro em blocos de concreto desde a base. h=1,30 contenção, o restante segue padrão conforme o muro. 5 sapatas 60x60. Restante estaca Ø20cm a cada 2,50m



PLANTA VIGAS BALDRAMES E PILARES - RAMPA E MURO DA FACHADA

ESC: 1/100

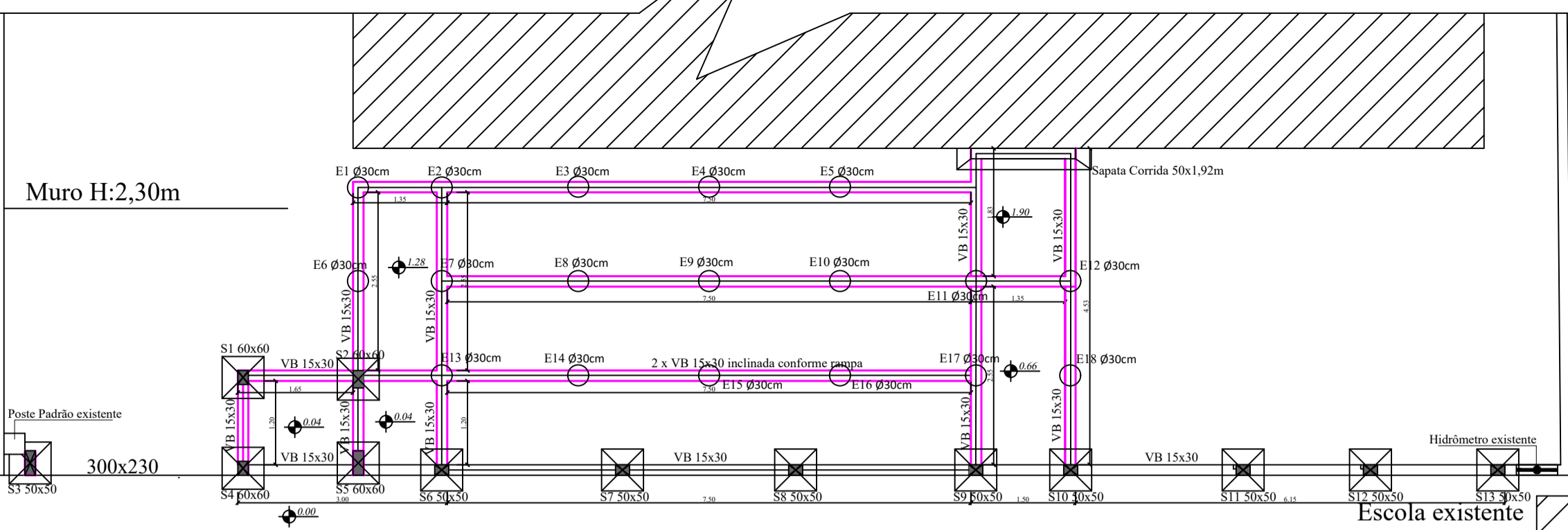
OBS: AS VIGAS BALDRAMES DA RAMPA SEGUEM A INCLINAÇÃO. VERIFICAR NÍVEIS NO LOCAL. NO ALINHAMENTO FRONTAL PREENCHER COM ALVENARIA DE BLOCO ESTRUTURAL.

Muro H:2,30m

300x230

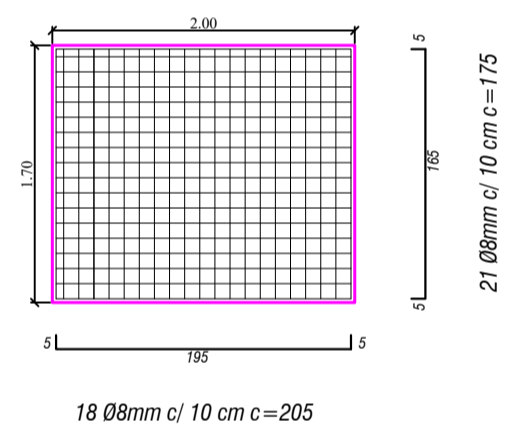
PLANTA DE FÔRMAS - VIGAS BALDRAMES - RAMPA E MURO DA FACHADA

ESC: 1/100

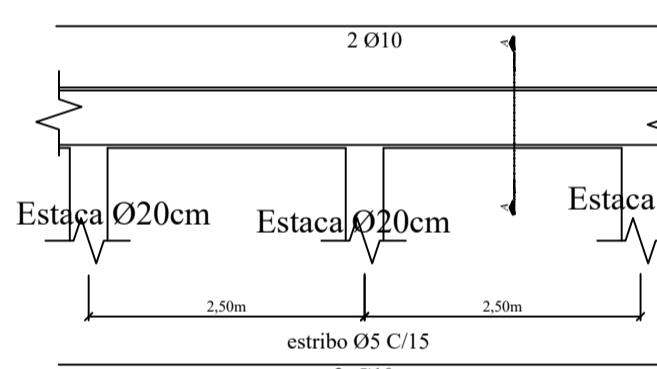


Laje Maciça HALL

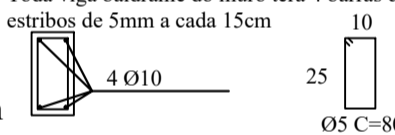
Espessura da Laje 8 cm



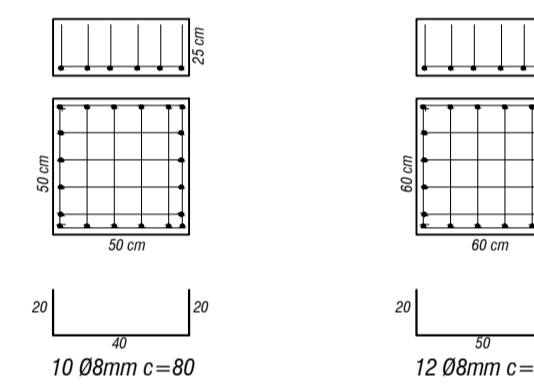
DETALHE - Viga Baldrame do muro de cercamento



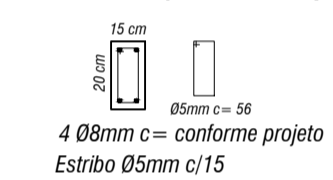
CORTE A - VIGA BALDRAME DO MURO E RAMPA
Toda viga baldrame do muro terá 4 barras de aço 10mm, e estribos de 5mm a cada 15cm



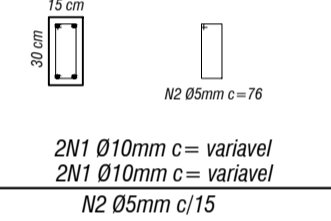
Sapatas



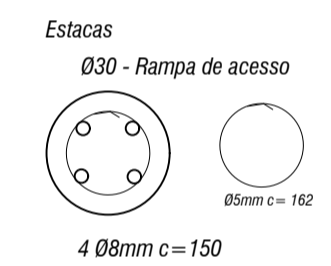
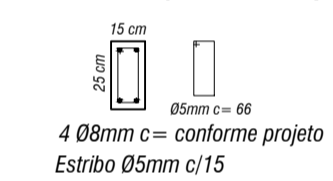
Pilares (15x20)



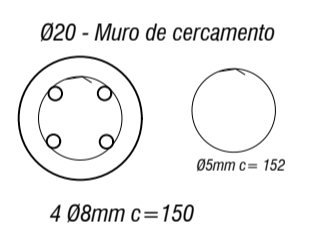
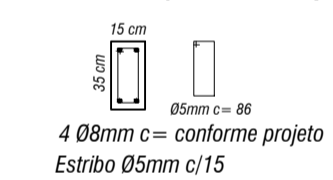
Vigas Baldrame e Cobertura



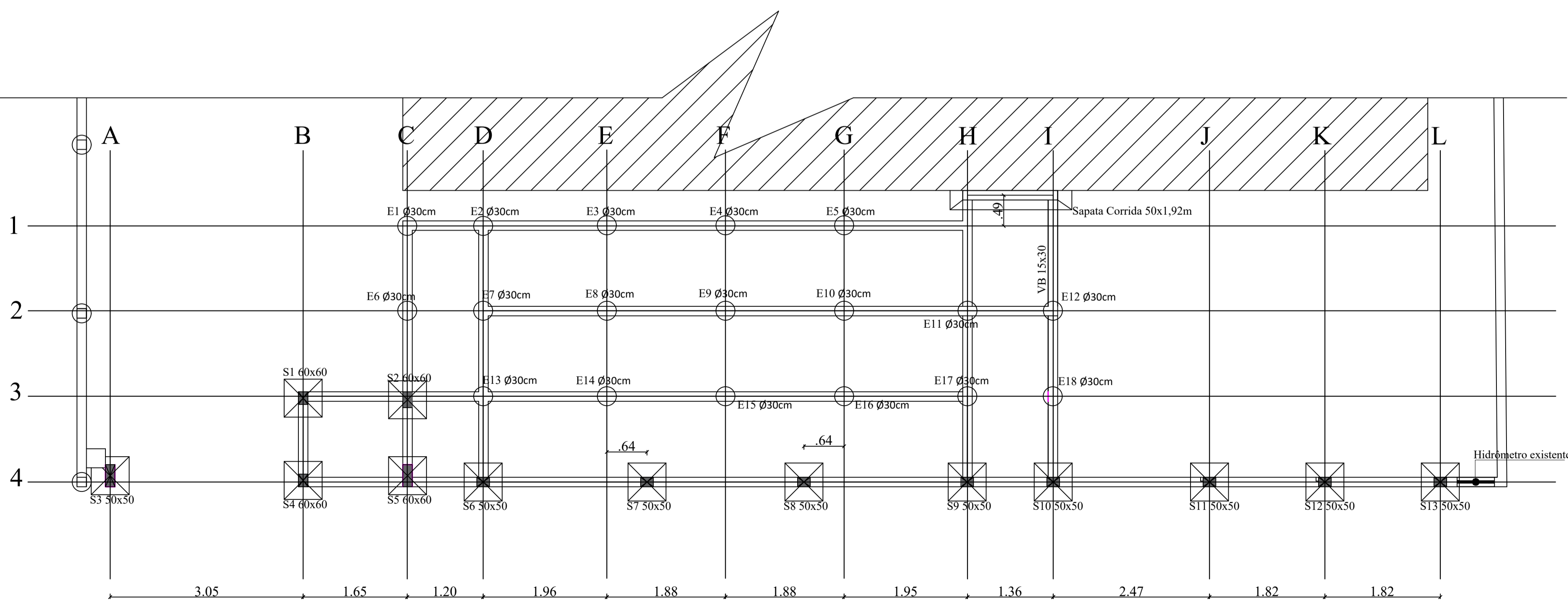
Pilares (15x25)



Pilares (15x35)



Detalhes SEM ESCALA



PLANTA DE LOCAÇÃO

ESC: 1/100

 Estado de Santa Catarina MUNICÍPIO DE SÃO DOMINGOS Administração 2021-2024		 Governo Municipal de SÃO DOMINGOS		
Obra:	EXECUÇÃO DE NOVO CERCAMENTO E RAMPA DE ACESSO DA ESCOLA INFANTIL MUNICIPAL PINGO DE GENTE		Data:	06/2023
Projeto:	Eng. Anelise Basso Pasqualli/ CREA - SC 123.631-9		Escala:	Indicada
Município:	Márcio Luiz Bigolin Grosbelli - Prefeito Municipal de São Domingos - SC		Área(m²):	378,38m²
Especificação:	Projeto Estrutural		Desenhista:	Caroline
			Prancha:	1/1